

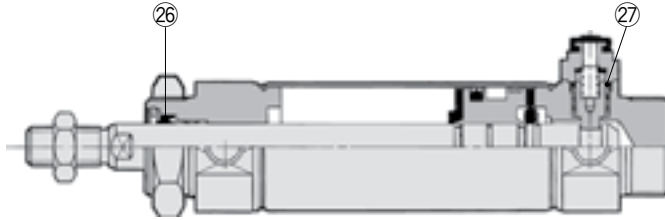
Series CBM2

ø20, ø25, ø32, ø40

Replacement Procedure is P.280

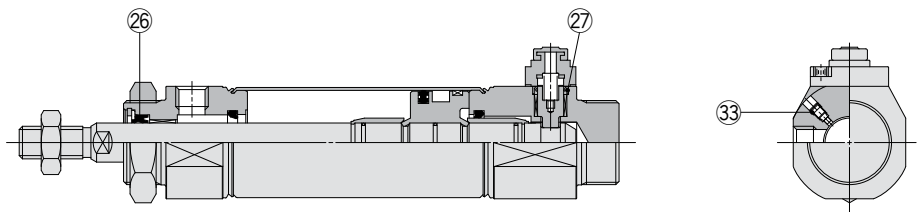
Construction

Head end lock



Manual release (Non-lock type): Suffix N

With air cushion



* The numbers are the same as the "Construction" of the Best Pneumatics No.2 Series CBM2.

Seal Kit List

No.	Description	Material	Note
26	Rod seal	NBR	33 is a non-replaceable part, so it is not included in the seal kit.
27	Lock piston seal		
33	Cushion needle seal		

*[BLUE](#) links will lead to purchase pages.

Replacement Parts: Seal Kit

Bore size (mm)	Kit no.	Contents
With lock in single end		
20	CBM2-20-PS	Set of left nos. 26, 27.
25	CBM2-25-PS	
32	CBM2-32-PS	
40	CBM2-40-PS	
With lock at double ends		
20	CBM2-20-PS-W	Set of left nos. 26, 27.
25	CBM2-25-PS-W	
32	CBM2-32-PS-W	
40	CBM2-40-PS-W	

* Seal kit includes 26 and 27. Order the seal kit, based on each bore size. (Except 33.)

* Seal kit includes a grease pack (10 g). Order with the following part number when only the grease pack is needed.

Grease pack part no.: GR-S-010 (10 g)

Actuators

Modular F.R.L.
Pressure Control Equipment

Air Preparation
Equipment

Industrial Filters

Replacement
Procedure

Actuators

Modular F.R.L.
Pressure Control Equipment

Industrial Filters