

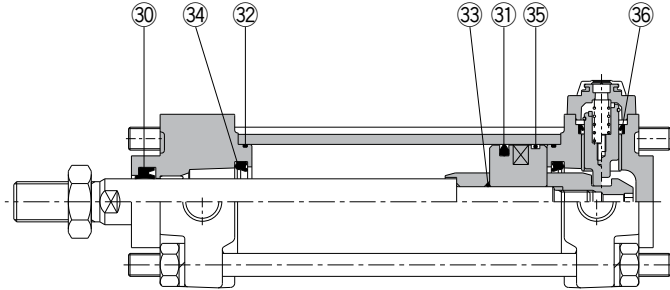
Series CBA2

ø40, ø50, ø63
ø80, ø100

Replacement
Procedure is
P.284

Construction

Head side end lock



Manual release non-lock type: Suffix N

* The numbers are the same as the "Construction" of the Best Pneumatics No.2 Series CBA2.

Seal Kit List

No.	Description	Material	Note
30	Rod seal	NBR	33 and 35 are non-replaceable parts, so they are not included in the seal kit.
31	Piston seal	NBR	
32	Cylinder tube gasket	NBR	
33	Piston gasket	NBR	
34	Cushion seal	NBR	
35	Wear ring	Resin	
36	Lock piston seal	NBR	

*[BLUE](#) links will lead to purchase pages.

Replacement Parts: Seal Kit

Bore size (mm)	Kit no.	Contents
Single end lock		
40	MBB40-PS	Set of left nos. 30, 31, 32, 34, 36.
50	MBB50-PS	
63	MBB63-PS	
80	MBB80-PS	
100	MBB100-PS	
Double end lock		
40	MBB40-PS-W	Set of left nos. 30, 31, 32, 34, 36.
50	MBB50-PS-W	
63	MBB63-PS-W	
80	MBB80-PS-W	
100	MBB100-PS-W	

* Seal kit includes 30, 31, 32, 34 and 36. Order the seal kit based on each bore size.

* Do not disassemble the trunnion style.

* Seal kit includes a grease pack (ø40, 50: 10 g, ø63, 80: 20 g, ø100: 30 g).

Order with the following part number when only the grease pack is needed.

Grease pack part no.: GR-S-010 (10 g), GR-S-020 (20 g)