

Pneumatic Logic Components

E Crouzet

Products and specifications subject to change without notice.

Operating fluid

- Compressed air or inert gas

Conditions of use

- Operating pressure 30 to 120 PSI (2 to 8 bars).
- Fluid: Filtered air to 50 microns - non lubricated.
- Operating temperature from 20 to 120° F (-5 to 50° C) under 20° F (5° C) the dew point must be below 5° F (10° C) for the application).
- For optimum performance, the elements should be inter-connected by air supply tubing with an internal diameter of $\geq 0.106"$ (25mm).

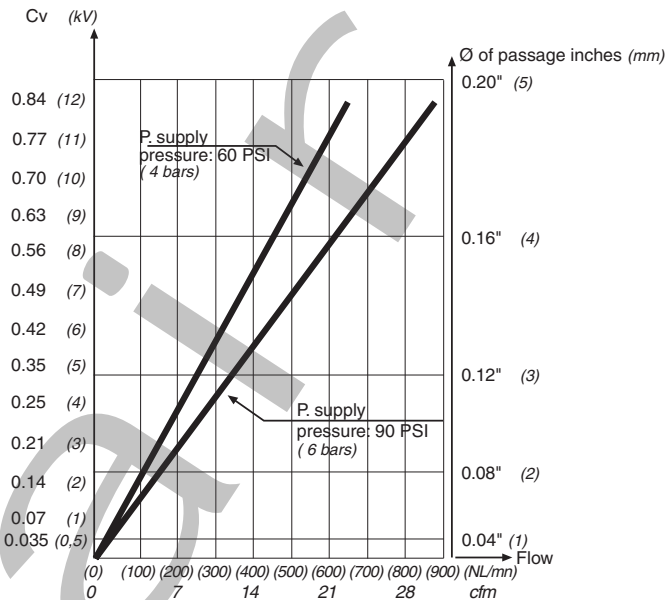
Mounting recommendations

- The elements should be mounted and piped in a clean atmosphere in order to prevent any form of pollution entering the system.
- Minimum torque for element fixing screws: 16"oz (5 cm/kg).
- Maximum torque for element fixing screws: 32"oz (10 cm/kg).

Characteristics common to all elements in the modular system.

- The characteristics have been obtained with a supply pressure at 90 psi (6 bars).
- The flow in cfm (NL/min) is the number of cubic feet (litres) of air at normal atmospheric pressure obtained with the output open to atmosphere and the supply pressure at 60 psi (4 bars).
- The consumption in cfm (NL/min) is the number of cubic feet (litres) of free air necessary for the unit to function.
- Cv (kV) = the flow coefficient of the equipment.
- Mechanical life 10 million and greater.

Flow graphs

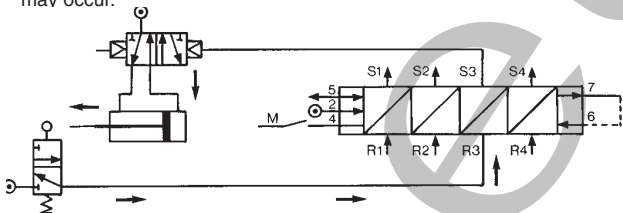


PAC Modules

The principle is to ensure the step by step operation of a sequential cycle.

A system comprises of individual modules which are joined together by means of a sub-base. Each module has a memory which delivers an output signal and receives an input signal.

An indicator on each module allows the operator to monitor the progress of the cycle and identify quickly and easily any faults which may occur.



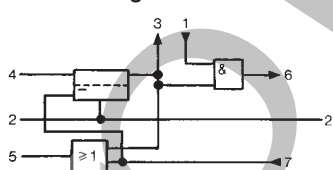
Operation results from the combination of three functions (memory, AND and OR) which constitute each module.

The memory activates the output and gives priority to the reset signal.

The AND element ensures the transition to the next module but only if an input signal is present.

The OR element ensures the resetting of all previously operated modules.

Function diagram

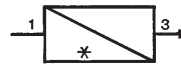
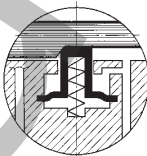


Sequencer module with maintained reset

Brake

This maintains the memory spool in position only when the supply is lost.

Module with auto reset



Brake

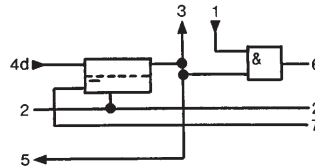
This returns the memory spool to the reset condition only when the supply is lost.

Shift register modules

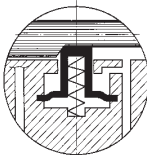
The general principle is to advance the sequencer step by step by command impulses to the inputs of the even steps, alternating with the command impulses to the inputs of the odd steps.

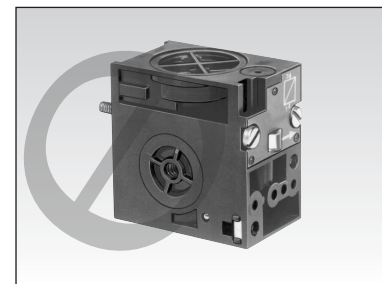
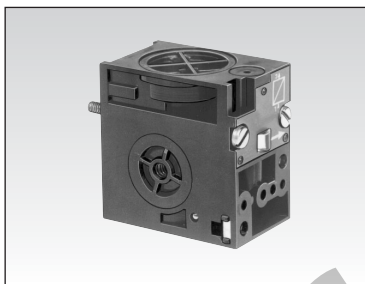
Used for example on a transfer machine to shift the information "bad component" collected at a test-station 'n' steps further along the machine to a reject station.

Function diagram



Auto reset sequencer module

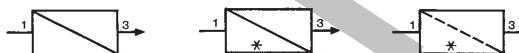




Part numbers

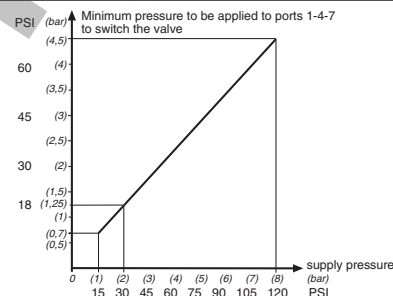
Part numbers	81 550 001	81 550 201	81 550 601
Versions	maintained	Auto Reset	Auto Reset

Symbol



Characteristics

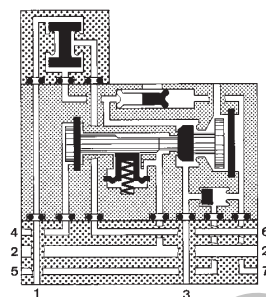
Operating pressure	psi (bar)	30 > 120 (2 > 8)	30 > 120 (2 > 8)	30 > 120 (2 > 8)
Orifice diameter	Inches (mm)	0.106" (2.7)	0.106" (2.7)	0.106" (2.7)
Flow at 90 PSI (6 bars)	cfm (Nl/min)	5.25 (150)	5.25 (150)	5.25 (150)
Connection - sub-base page 5/44 - 5/45		●	●	●
Weight	grams	(70)	(70)	(70)



Principle of operation

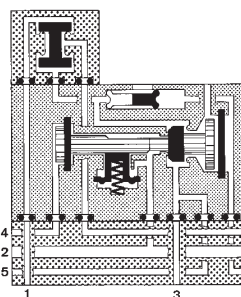
(supplied without logic element. For choice of units see page 5/36 - 5/37 - 5/39 - 5/40 - 5/42)

Programmable Air Controller (PAC) module with maintained reset



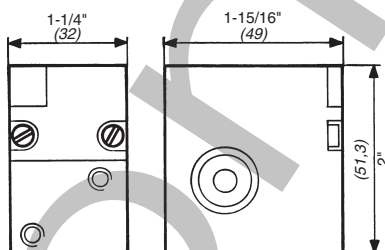
- 1 - Input signal
- 2 - Supply
- 3 - Output signal
- 4 - Start signal
- 5 - In cycle signal
- 6 - End of cycle signal
- 7 - Reset to zero signal

Shift register with maintained reset

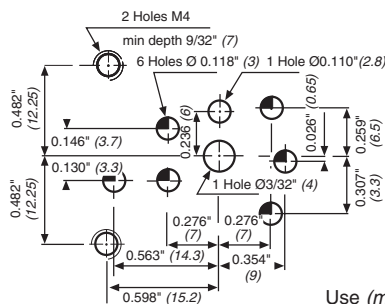


- 1 - Input signal
- 2 - Supply
- 3 - Port plugged
- 4 - Input signal
- 5 - Port plugged
- 6 - Output signal
- 7 - Reset to zero signal

Dimensions



Mounting plan for sequencer

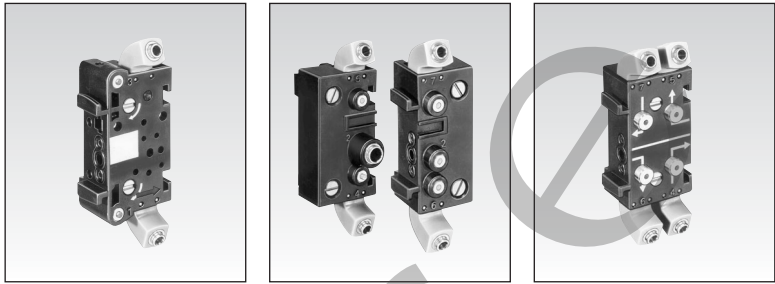


Use (metric) dimensions for critical data.

Other information	To order, specify :
	<p>Standard products 1 Part number</p> <p>Standard products, non stocked Example : Sequencer modules 81 550 001</p>

Products and specifications subject to change without notice.

Sequencer sub-bases



1

Part numbers

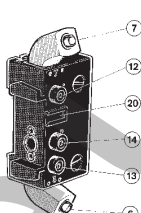
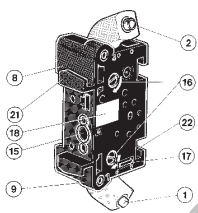
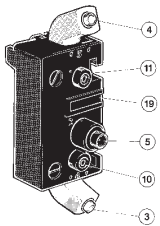
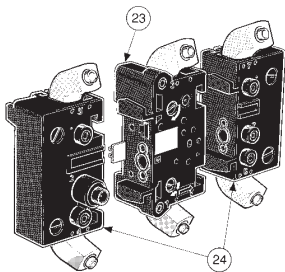
	81 551 101	81 552 101	81 552 601
Front connecting (DIN-omega)	Sub-base (DIN omega)	End bases - 1 pair entry & exit modules	Diversion base

Characteristics

Sub-bases	Rotatable connectors	•	•	•
	Pressure indicators	•	•	•
Weight	grams	55	135	60

Sequencer connections

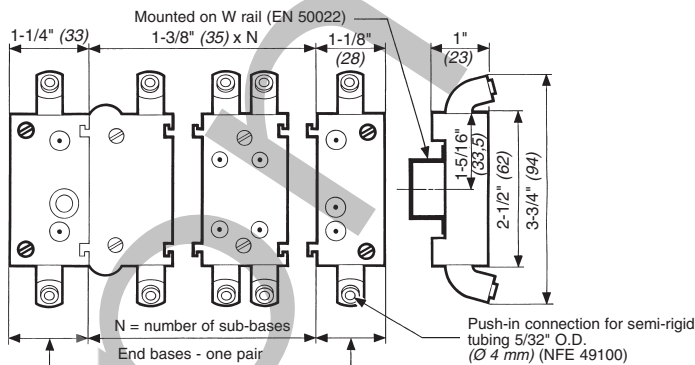
Front connecting



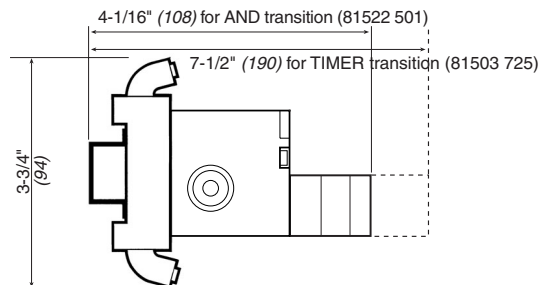
- 1 - Input port (green - port 1) $\text{Ø } 5/32''$ (4 mm)
- 2 - Output port (red - port 3) $\text{Ø } 5/32''$ (4 mm)
- 3 - Input port, cycle start (green - port 4) $\text{Ø } 5/32''$ (4 mm)
- 4 - Output port, in-cycle signal (red - port 5) $\text{Ø } 5/32''$ (4 mm)
- 5 - Supply port (yellow - port 2) $\text{Ø } 1/4''$ (6.35 mm)
- 6 - Output port, end of cycle (red - port 6) $\text{Ø } 5/32''$ (4 mm)
- 7 - Input port, reset to zero (green - port 7) $\text{Ø } 5/32''$ (4 mm)
- 8 - Output indicator (red)
- 9 - Input indicator (green)
- 10 - Cycle start indicator at port 4 (green)
- 11 - In-cycle indicator at port 5 (red)
- 12 - Input indicator at port 7 (green)
- 13 - End of cycle indicator at port 6 (red)
- 14 - Supply indicator at port 2 (yellow)
- 15 - Interconnecting ports
- 16 - Mounting screws
- 17 - Engraved arrow to indicate direction of sequence
- 18 - Marking tag
- 19 - Marking tag position
- 20 - Marking tag position
- 21 - Mounting tongue
- 22 - Mounting groove
- 23 - Sub-base
- 24 - End bases

Dimensions

Front connecting

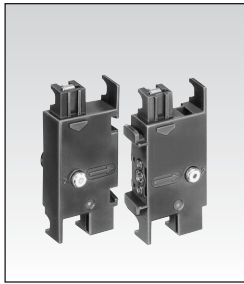
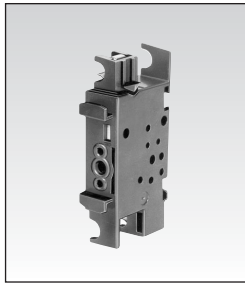


Finished product on DR rail



Use (metric) dimensions for critical data.

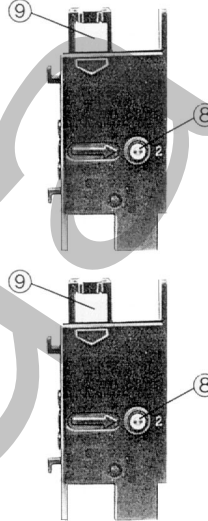
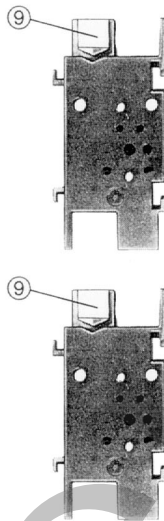
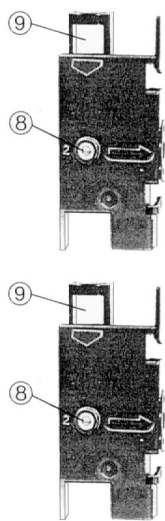
Products and specifications subject to change without notice.



81 551 001	81 552 001
—	—
Sub-base (with clips)	End bases - one pair entry & exit modules
—	—
40	120

1

Rear connecting

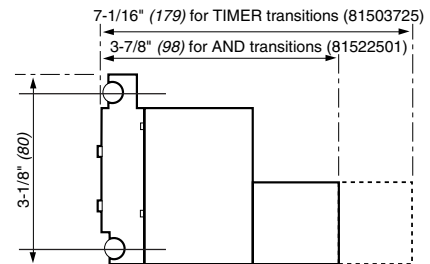
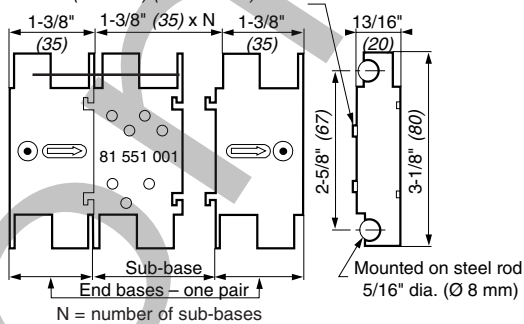


- 1 - Input port (marked port 1)
- 2 - Supply port (Port 2)
- 3 - Output port (Port 3)
- 4 - Cycle start signal port (Port 4)
- 5 - In-cycle signal port (Port 5)
- 6 - End of cycle signal port (Port 6)
- 7 - Reset to zero signal port (Port 7)
- 8 - Indicator at supply port
- 9 - Marking area

Rear connecting

Finished product on 5/16" rods.

Push-in connection for semi-rigid tubing 5/32" O.D.
(Ø 4 mm) (NFE 49100)



Use (metric) dimensions for critical data.

To order, specify :

Standard products

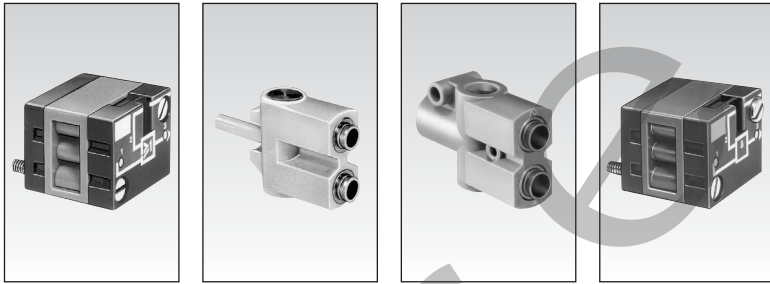
1

Part number

Example : Sequencer sub-bases - 81 551 101

5

Products and specifications subject to change without notice.

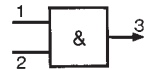


1

Part numbers

Functions	OR	81 521 501	81 540 001	81 540 004	81 522 501
	AND	—	—	—	—
	YES	—	—	—	—
	NOT	—	—	—	—
Version		On sub-base page 5/44 - 5/45	Plug-in Ø 5/32" (4mm)	Plug-in Ø 5/32" (4mm)	On sub-base page 5/44 - 5/45

Symbol



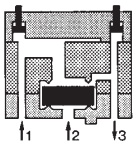
Characteristics

Push-in connection for semi-rigid tubing (NFE 49100) O.D.	Male/Female/Female	—	Ø 5/32" (4 mm)	—	—
	Female/Female/Female	—	—	Ø 1/4" (6.35 mm)	—
Color		Blue	Blue	Blue	Green
Operating pressure	psi (bar)	30 > 120 (2 > 8)	30 > 120 (2 > 8)	30 > 120 (2 > 8)	30 > 120 (2 > 8)
Orifice diameter	inches (mm)	0.106" (2.7)	0.106" (2.7)	0.157" (4)	0.106" (2.7)
Flow at 90 PSI (6 bars)	cfm (Nl/min)	6 (170)	6 (170)	7 (200)	6 (170)
Pressure indicator		•	—	—	•
Switching time	ms	—	—	—	—
Operating temperature	°F (°C)	+20 > +120 (-5 > +50)	+20 > +120 (-5 > +50)	+20 > +120 (-5 > +50)	+20 > +120 (-5 > +50)
Mechanical life	cycles	—	10 million	10 million	10 million
Weight	grams	25	12	25	25

Pilot/pressure curves

P.p : Pilot pressure
P.a : Supply pressure

Principle of operation

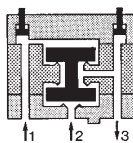


OR element

The output signal "S" is present when a signal at "a" OR "b" is present

$$S = a \text{ OR } b$$

$$S = a + b$$



AND element

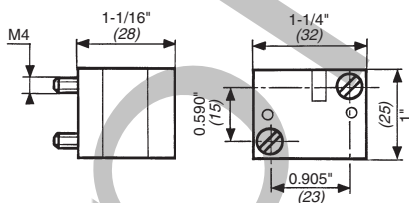
The output signal "S" is present only when signals "a" AND "b" are present simultaneously.

$$S = a \text{ AND } b$$

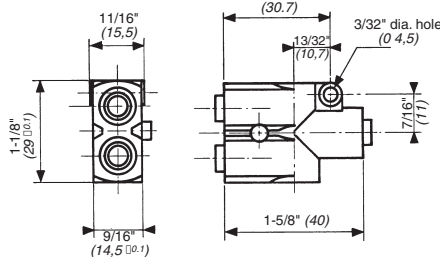
$$S = a \cdot b$$

Dimensions

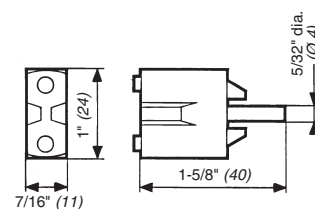
81 521 501 - 81 522 501



81 540 004 - 81 541 010



81 540 001 - 81 541 001

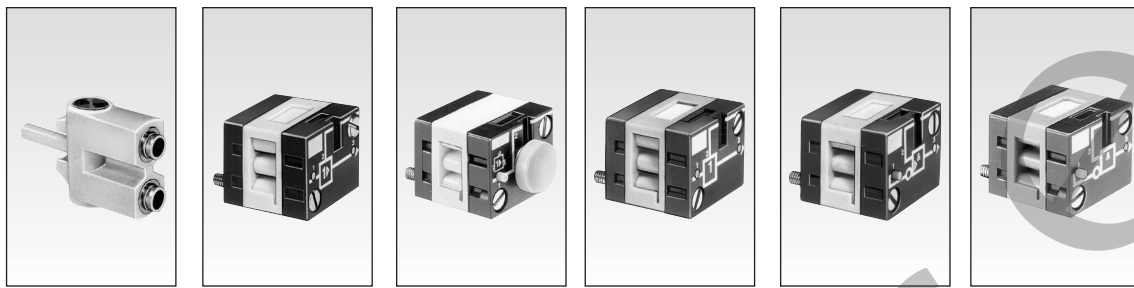


Use (metric) dimensions for critical data.

Other information

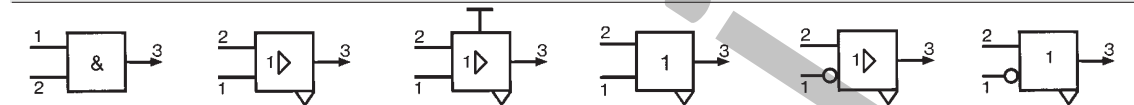
See page 4/8 for mounting plan for logic elements.

Products and specifications subject to change without notice.

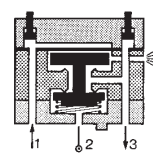
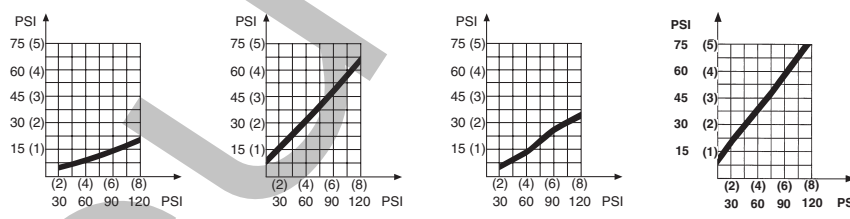


1

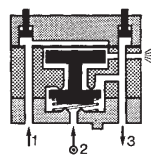
81 541 001	81 501 025	81 501 065	81 503 025	81 504 025	81 506 025
Plug-in Ø 5/32" (4)	Standard On sub-base page 5/44 - 5/45	Manual override On sub-base page 5/44 - 5/45	Low-ratio On sub-base page 5/44 - 5/45	Standard and inhibition On sub-base page 5/44 - 5/45	Low-ratio On sub-base page 5/44 - 5/45



Ø 5/32" (4 mm)					
Green	Yellow	Yellow	Orange	Light grey	Dark grey
30 > 120 (2 > 8)	30 to 120 (2 to 8)	30 to 120 (2 to 8)	30 to 120 (2 to 8)	30 to 120 (2 to 8)	30 to 120 (2 to 8)
0.106" (2.7)	0.106" (2.7)	0.106" (2.7)	0.106" (2.7)	0.106" (2.7)	0.106" (2.7)
5-1/4 (150)	6 (170)	6 (170)	6 (170)	6 (170)	6 (170)
	<4	<4	<4	<4	<4
+20 > +120 (-5 > +50)	+20 > +120 (-5 > +50)	+20 > +120 (-5 > +50)	+20 > +120 (-5 > +50)	+20 > +120 (-5 > +50)	+20 > +120 (-5 > +50)
10 million	10 million	10 million	10 million	10 million	10 million
13	30	35	30	30	30

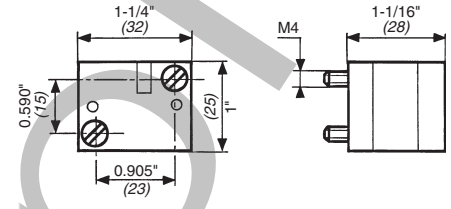


YES element
The output signal "S" is only present when the pilot is present :
 $S = a$ YES b $S = a$

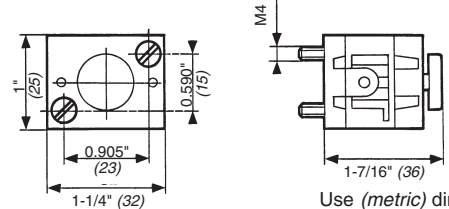


NOT element
The output signal "s" is present only if the input signal "a" is NOT present. The output signal is therefore the inverse of the pilot signal.
 $S = \bar{a}$
If the supply port is connected to a 2nd input "b", the function obtained is called Inhibition.
 $S = \bar{a} \cdot b$

81 501 025 - 81 503 025
81 504 025 - 81 506 025



81 501 065



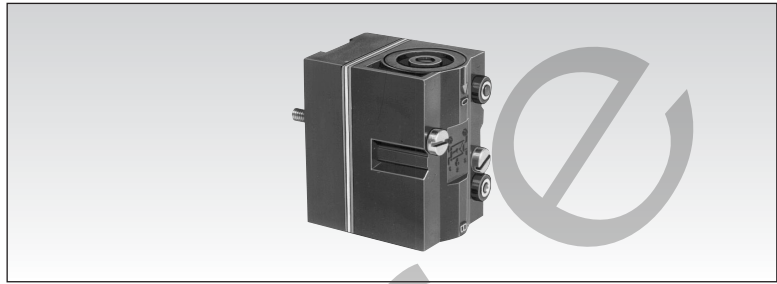
Use (metric) dimensions for critical data.

To order, specify :

Standard products	1 Part number
Standard products, non stocked	Example : Logic elements 81 521 501

Products and specifications subject to change without notice.

Memory element



Part numbers

Version

81 523 201

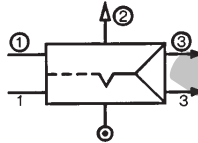
With pressure indicator

81 523 601

With pressure indicator and manual override

1

Symbol



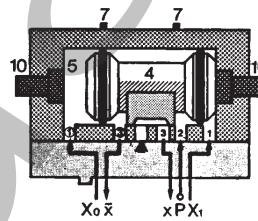
Characteristics

Color		Black	Black
Operating pressure	psi (bar)	30 > 120 (2 > 8)	30 > 120 (2 > 8)
Orifice diameter	inches (mm)	0.06" (2.7)	0.06" (2.7)
Minimum memory pilot pressure	psi (bar)	40 (2.5)	40 (2.5)
Flow at 90 PSI (6 bars)	cfm (Nl/min)	7 (200)	7 (200)
Connection - On sub-base page 5/44 - 5/45			
Switch Time	ms	29	25
Weight	grams	90	90

Principle of operation

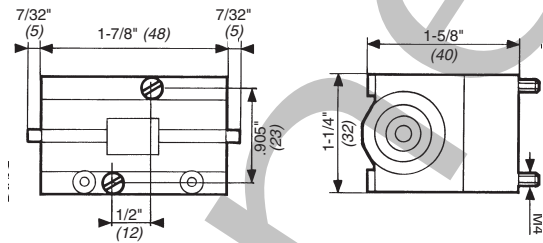
The function is that of a 4/2 valve. The appearance of signal "X1" causes the displacement of the slide valve. The output port "x" is then put under pressure. This state is remembered until the arrival of signal "X0". This signal reverses the slide valve, the output "x" is put under pressure. This state is likewise remembered. The output :

- "x" under pressure indicates that the information in the MEMORY is "X1".
- "x" under pressure indicates that the information in the MEMORY is "X0".

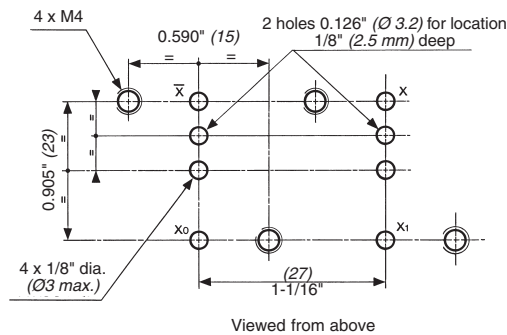


Dimensions

81 523 201 - 81 523 601



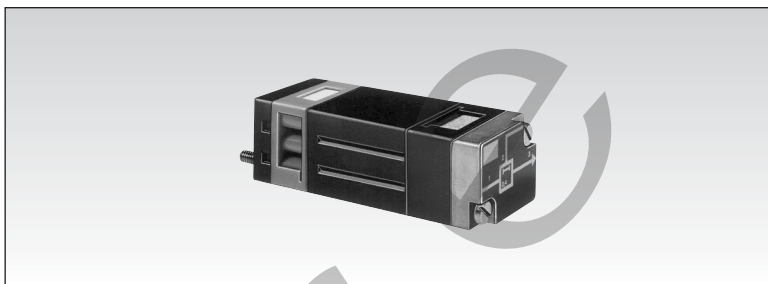
Dimensions of logic and memory elements



Use (metric) dimensions for critical data.

Other information	To order, specify :
	<p>Standard products</p> <p>1 Part number Example : Memory element - 81 523 201</p>

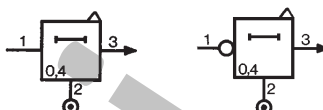
Products and specifications subject to change without notice.



Part numbers

Version	81 503 540 Positive output (N.C.)	81 506 540 Negative output (N.O.)
---------	---	---

Symbol



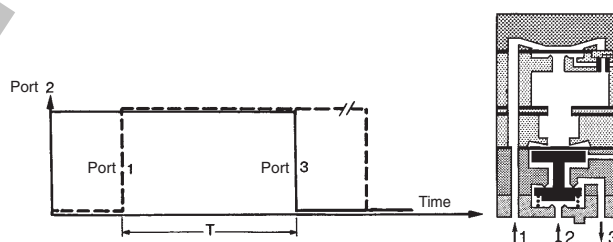
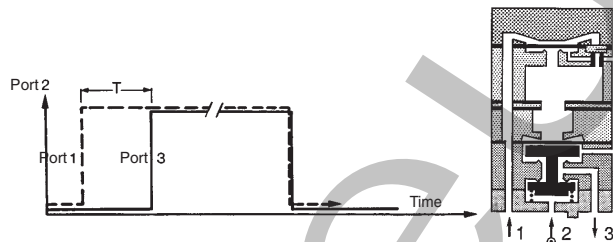
Characteristics

Timing	seconds	0.4	0.4
Operating pressure	psi (bar)	30 > 120 (2 > 8)	30 > 120 (2 > 8)
Flow at 90 psi (6 bars)	cfm (Nl/min)	6 (170)	6 (170)
Orifice diameter	inches (mm)	0.106 (2.7)	0.106 (2.7)
Accuracy	%	± 5	± 5
Min. reset time	seconds	<0.1	<0.1
Connection - On sub-base page 5/44 - 5/45		•	•
Operating temperature	°F (°C)	+20 > +120 (-5 > +50)	+20 > +120 (-5 > +50)
Mechanical life	operations	10 million	10 million
Weight	grams	106	106
Relay color		orange	dark gray

Principle of operation

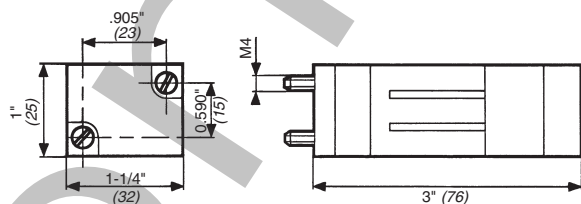
with positive output (N.C.)

with negative output (N.O.)



Dimensions

81 503 540 - 81 506 540

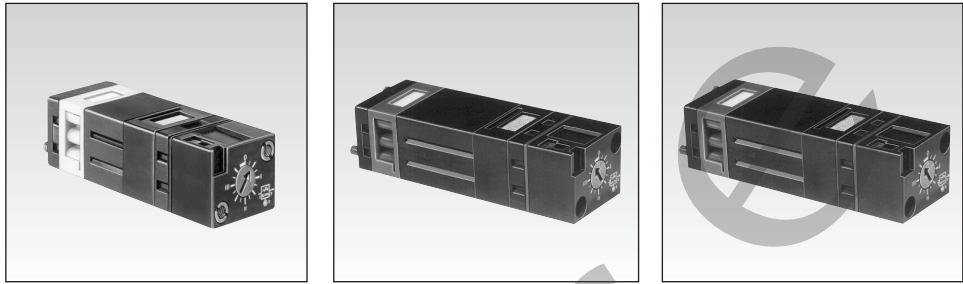


Use (metric) dimensions for critical data.

Other information	To order, specify :
	<p>Standard products</p> <p>1 Part number Example : Timers (with fixed timing) - 81 503 540</p> <p>Standard products, non stocked</p>

Products and specifications subject to change without notice.

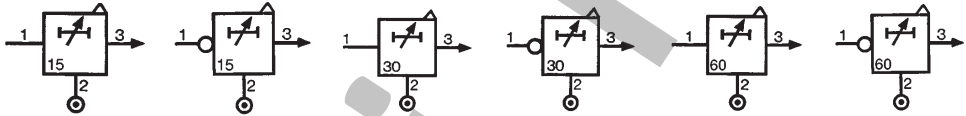
Timers (with adjustable timing)



Part numbers

	81 503 710	81 506 710	81 503 720	81 506 720	81 503 725	81 506 725
Function positive	●	—	●	—	●	—
Function negative	—	●	—	●	—	●

Symbol



Characteristics

Timing	s	0.1 • 15	0.1 • 15	0.1 • 30	0.1 • 30	0.1 • 60	0.1 • 60
Operating pressure	psi (bar)	30 > 120 (2 > 8)	30 > 120 (2 > 8)	30 > 120 (2 > 8)	30 > 120 (2 > 8)	30 > 120 (2 > 8)	30 > 120 (2 > 8)
Flow at 6 bars	cfm (Nl/min)	6 (170)	6 (170)	6 (170)	6 (170)	6 (170)	6 (170)
Orifice diameter	inches (mm)	0.406 (27)	0.406 (27)	0.406 (27)	0.406 (27)	0.106 (2.7)	0.106 (2.7)
Accuracy	%	± 5	± 5	± 5	± 5	± 5	± 5
Min. reset time	s	<0.1	<0.1	<0.1	<0.1	<0.1	<0.1
Connection	On sub-base page 5/44 - 5/45						
Operating temperature	°C	-5 +50	-5 +50	-5 +50	-5 +50	-5 +50	-5 +50
Mechanical life	operations	>10 ⁷	>10 ⁷	>10 ⁷	>10 ⁷	>10 ⁷	>10 ⁷
Weight	g	90	90	100	100	120	120

Accessories

Panel mounting adaptor	79 451 698	79 451 698	79 451 903	79 451 903	—	—
Weight	g	53	53	53	—	—

Principle

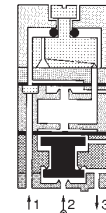
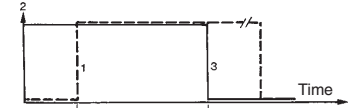
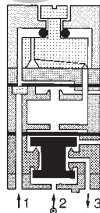
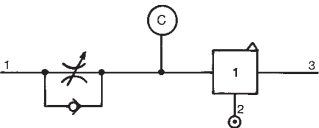
The operation of these pneumatic timers is similar to that of electronic timers (circuit with capacitor/resistor)

Principle of operation

with positive output

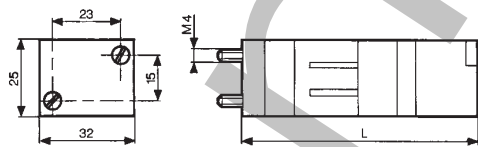
with negative output

Timing by charging of reservoir



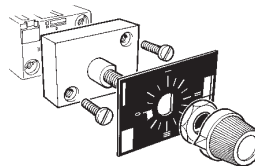
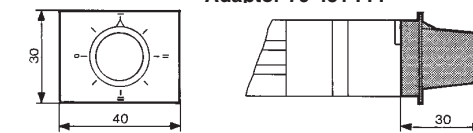
The reservoir fills via the flow restrictor until the switching point of the timer output is reached (positive or negative).
The non-return valve allows the reservoir to be emptied rapidly for the next timing.

Dimensions



Part numbers	L (mm)
81 503 710 - 81 506 710	78
81 503 720 - 81 506 720	92
81 503 725 - 81 506 725	125

Adaptor 79 451 ...



For panel mounting, a pre-drilled hole Ø 10.5 mm is required

To order, specify :

Standard products

1 Part number

2 Accessory

Standard products, non stocked

Example : Timers (with adjustable timing) - 81 503 710 - Adaptor 79 451 698

Products and specifications subject to change without notice.



Part numbers

Single impulse generator	Fixed	81 507 540	—	—
	Adjustable	—	81 507 720	—
Adjustable frequency generator		—	—	81 506 940

Symbol



Characteristics

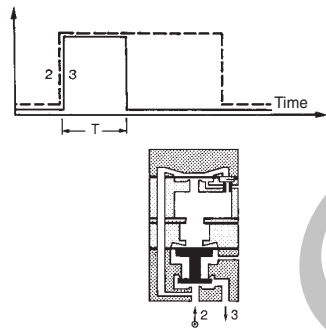
Timing	seconds	0.4	0.1 > 30	—
Frequency	Hz	—	—	0.02 > 8 hz
Operating pressure	psi (bar)	30 > 120 (2 > 8)	30 > 120 (2 > 8)	30 > 120 (2 > 8)
Flow at 6 bars	cfm (Nl/min)	6 (170)	6 (170)	6 (170)
Orifice diameter	inches (mm)	0.106 (2.7)	0.106 (2.7)	0.106 (2.7)
Accuracy	%	± 5	± 5	± 5
Min. reset time	seconds	<0.1	<0.1	<0.1
Connection - On sub-base page 5/44 - 5/45				
Operating temperature	°F (°C)	+20 > +120 (-5 > 50)	+20 > +120 (-5 > 50)	+20 > +120 (-5 > 50)
Mechanical life	cycles	10 million	10 million	10 million
Weight	grams	106	180	68

Accessories

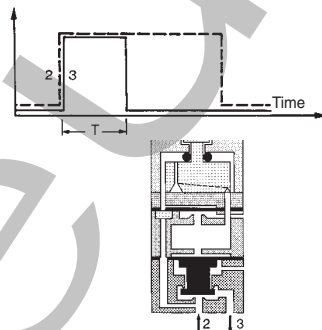
Panel mounting adaptors	—	79 451 904	79 451 905
Weight (g)	—	53	53

Principle of operation

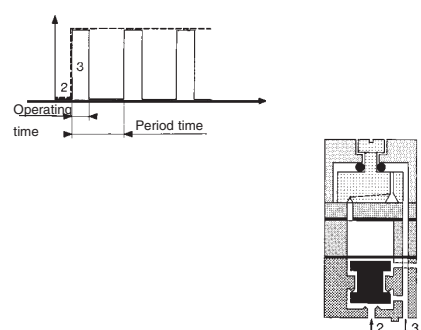
Single impulse generator



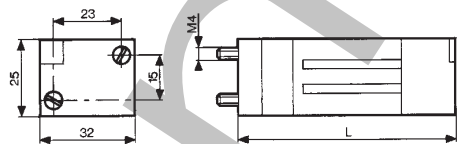
Adjustable impulse generator



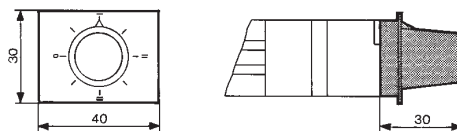
Frequency generator



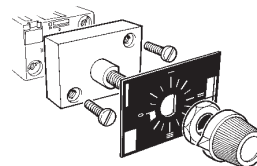
Dimensions



79 451



Part numbers	L (mm)
81 507 540	73
81 507 720	99
81 506 940	72



For panel mounting, a pre-drilled hole Ø 10.5 mm is required

To order, specify :

Standard products

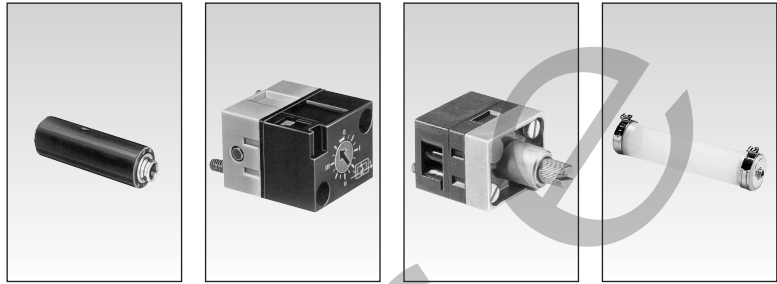
1 Part number

2 Accessory

Standard products, non stocked

Example : Timer 81 507 720 - Panel mounting adaptor 79 451 904

Products and specifications subject to change without notice.

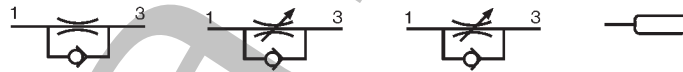


1

Part numbers

One-way in-line fixed flow restrictors	Flow at 4 bars NI/min	Ø orifice (mm)				
	0.18 → 0.30	0,3	white	81 529 003	—	—
	0.35 → 0.50	0,4	yellow	81 529 004	—	—
	0.58 → 0.77	0,5	red	81 529 005	—	—
	0.80 → 1.06	0,6	green	81 529 006	—	—
	1.10 → 1.39	0,7	blue	81 529 007	—	—
	1.45 → 1.65	0,8	grey	81 529 008	—	—
	2.30 → 2.80	1	black	81 529 010	—	—
	2.08 → 0.12	0,25	white	81 529 025	—	—
One-way adjustable flow restrictor				—	81 525 101	81 526 001
Capacity for timing	10 • 60 s			—	—	79 452 808

Symbol

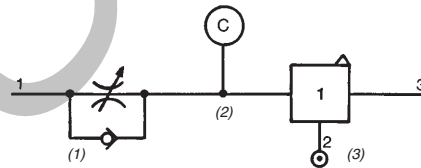


Characteristics

Free flow	cfm	(NI/min)	Depending on orifice	1.06	(30)	7	(200)	—
Orifice diameter	inches	(mm)	Depending on orifice	0 > 0.02	(0 > 0.5)	0 > 0.07	(0 > 1.7)	—
Operating pressure	psi	(bars)	15 > 120	(1 > 8)	15 > 120	(1 > 8)	30 > 120	(2 > 8)
Timing	seconds		—	—	—	—	—	10 > 60 or 60 > 180
Capacity	Cu. in.	(cm ³)	—	—	—	—	—	1.8 (30) > 5.5 (90)
Connection	Sub-base page 5/44 - 5/45 Push-in connection for semi-rigid tubing (NFE 49100)	mm	Ø 4	—	—	—	—	Ø 4
Weight	g		8	60	70	40		

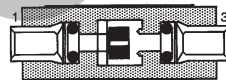
Connections

- For timing circuit
- One-way flow restrictor 81 525 0 - 81 529 0 (1)
- Reservoir 79 452 808 (2)
- Relay element 81 503 0 - 81 506 0 (3) page 4/7
- Sub-base page 4/14 - 4/15

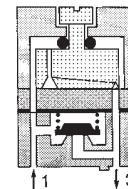


Principle of operation

One-way with fixed flow



One-way with adjustable flow



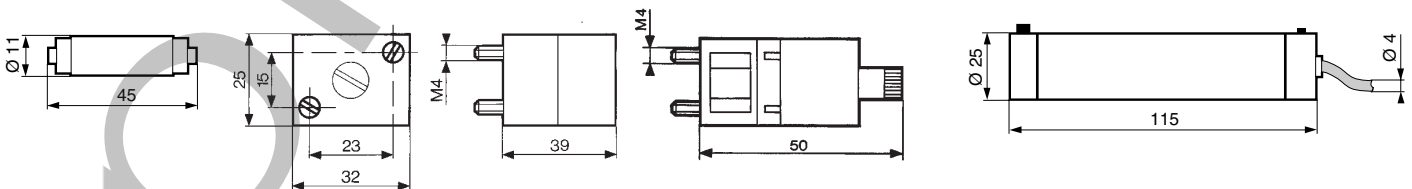
Dimensions

81 529

81 525 101

81 526 001

79 452 808



Other information

One-way flow restrictor with orifice diameter of 1.4 mm on request.

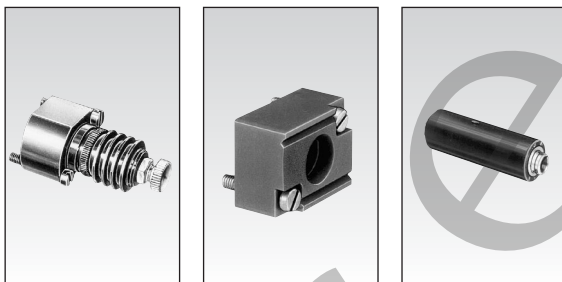
To order, specify :

Standard products

1 Part number

Example : Restrictor - 81 529 003

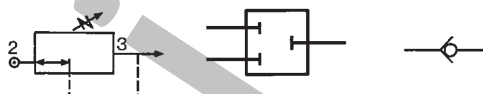
Products and specifications subject to change without notice.



Part numbers

Mini-regulator	81 527 001	—	—
Plug element	—	81 520 601	—
In-line non-return	—	—	81 529 901

Symbol



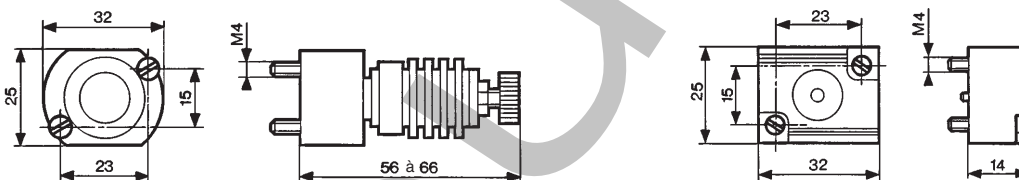
Characteristics

Operating pressure	psi	(bars)	30 > 120 (2 > 8)	—	30 > 120 (2 > 8)
Flow at 6 bars	cfm	(Nl/min)	7 (200)	—	7 (200)
Adjustable output pressure	psi	(bars)	15 > 120 (1 > 8)	—	—
Connection	sub-base page 5/44 - 5/45		—	•	—
	Push-in connection for semi-rigid tubing (NFE 49100)		mm	—	Ø 4
Weight			g	150	70

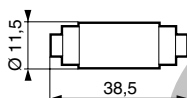
Dimensions

81 530 ...

81 520 601



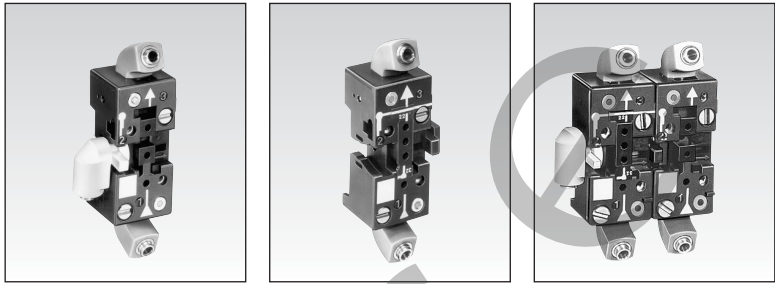
81 529 901



Other information	To order, specify :
81 530 001 / 81 530 101 / 81 530 801 on request.	<div style="background-color: black; width: 20px; height: 10px; display: inline-block;"></div> Standard products
	<div style="background-color: #cccccc; width: 20px; height: 10px; display: inline-block;"></div> Standard products, non stocked
	1 Part number Example : Regulator - 81 527 001

Products and specifications subject to change without notice.

Sub-bases for logic elements and relays



1

Part numbers

	81 532 104	81 532 102	81 542 002
Two-hand module (page 5/7)	● 1	● 1	—
Pressure decay sensor (page 5/12)	● 1	● 1	—
Pressure switches (page 5/25)	● 1	● 1	—
Manostats - vacuostats (pages 5/26 - 5/27)	● 1	● 1	—
Leak sensor and amplifier relays (pages 5/28 - 5/29)	● 1	● 1	—
Logic elements and timers (pages 5/36 - 5/37 - 5/41)	● 1	● 1	—
Regulator accessories (page 5/42 - 5/43)	● 1	● 1	—
Memory relay (page 5/38)	—	—	● 1

Note : The number indicates the qty of logic footprints on the base

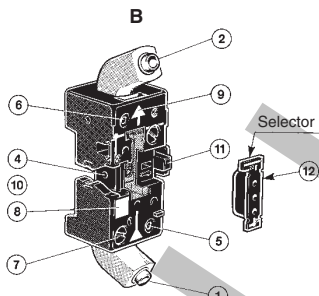
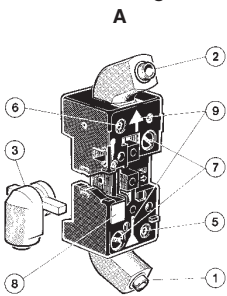
Characteristics

Push-in connection for semi-rigid tubing 5/32" O.D.
(Ø 4 mm) (NFE 49100)

	rotatable	rotatable	rotatable
Mounting	DIN rail 35 mm EN 50022	DIN rail 35 mm EN 50022	DIN rail 35 mm EN 50022
Weight	grams 56	grams 52	grams 95

Bases for elements and relays

Front connecting

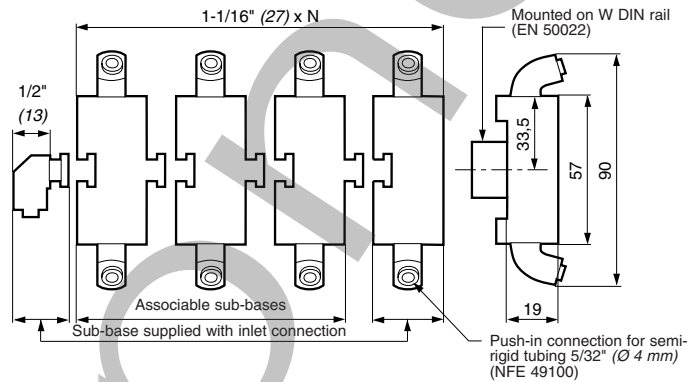


- A - Single sub-base or end base
- B - Associable sub-base
- 1 - Input port (green - port 1)
- 2 - Output port (red - port 3)
- 3 - Input/supply port (yellow - port 2) Ø 5/32" (4 mm)
- 4 - Input port integral to sub-base
- 5 - Input indicator (green)
- 6 - Output indicator (red)
- 7 - 1/4 turn screws
- 8 - Marking tag
- 9 - Arrow indicating flow direction
- 10 - Mounting tongue
- 11 - Mounting groove
- 12 - Selector

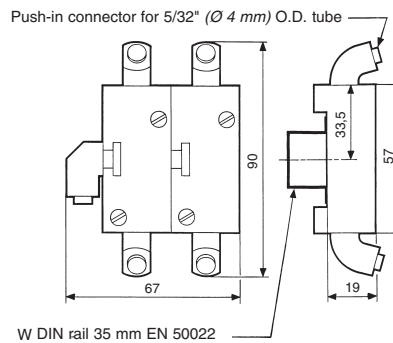
Dimensions

81 532 104 - 81 532 102

81 542 002

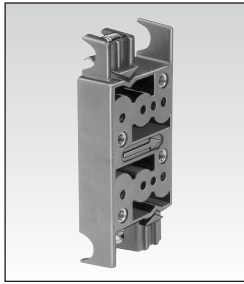
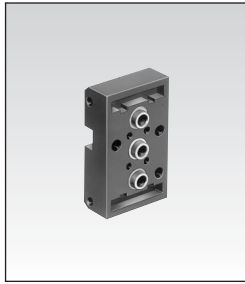


N = number of sub-bases.



Use (metric) dimensions for critical data.

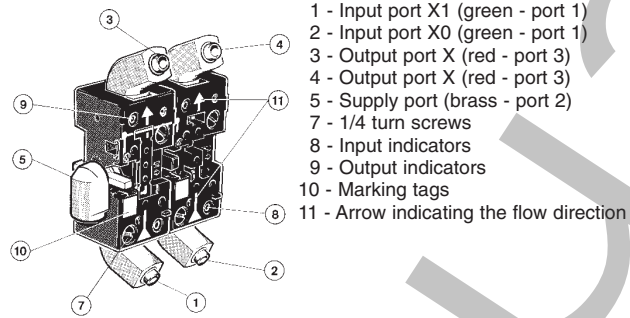
Products and specifications subject to change without notice.



81 532 001	81 531 001
● 1	● 2
● 1	● 2
● 1	● 2
● 1	● 2
● 1	● 2
● 1	● 2
● 1	● 2
—	● 1

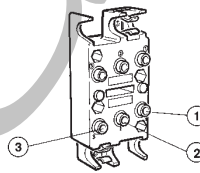
rear	rear
2 M4 screws	Clips for rails 5/16" dia. (Ø 8 mm)
10	35

Memory element sub-base, front and rear connecting



- 1 - Input port X1 (green - port 1)
- 2 - Input port X0 (green - port 1)
- 3 - Output port X (red - port 3)
- 4 - Output port X (red - port 3)
- 5 - Supply port (brass - port 2)
- 7 - 1/4 turn screws
- 8 - Input indicators
- 9 - Output indicators
- 10 - Marking tags
- 11 - Arrow indicating the flow direction

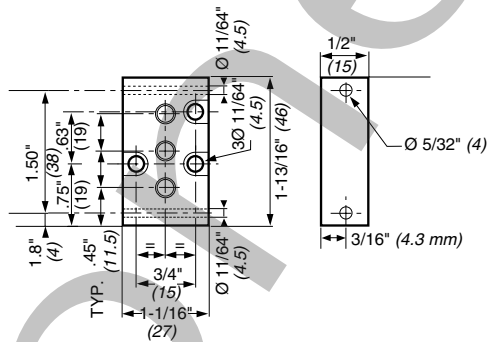
Rear connecting



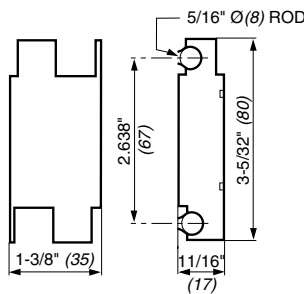
The modular logic elements are mounted by means of 2 screws onto the sub-base. A locating pin on each element prevents incorrect mounting. The piping of an element is achieved via the sub-base. This has 3 push-in connections which accept semi-rigid tubing of Ø 5/32" (4 mm).

- 1 - Input signal
- 2 - Signal port for passive logic elements, air supply for active logic elements.
- 3 - Output signal

81 532 001



81 531 001

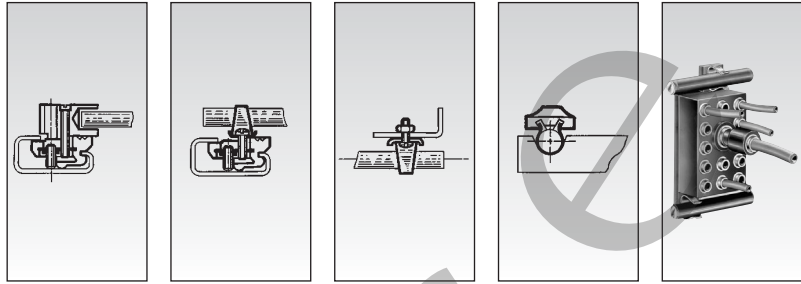


Use (metric) dimensions for critical data.

To order, specify :

Standard products	1 Part number Example : Sub-bases for logic elements and relays 81 532 104
-------------------	--

Products and specifications subject to change without notice.



Part numbers

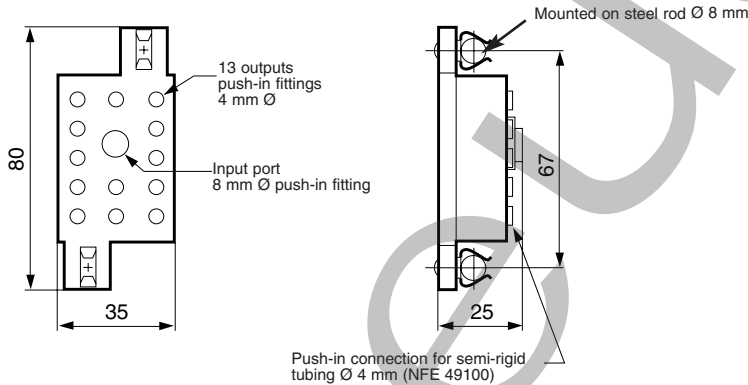
Mounting equipment	81 533 501 Hole domino	81 533 001 Clip domino	79 450 609 Bar clips Ø 8	79 450 618 Locking clip	—
Supply manifold 13 outputs	—	—	—	—	81 536 801
Nylon tubing					
	Ø D1	Ø D2	R min. of curvature		
Natural	2.7	4	18	—	—
Green	2.7	4	18	—	—
Red	2.7	4	18	—	—
Natural	4	6	35	—	—

Characteristics

Weight (g)	8	4	80	40	80
	For mounting on the end of a zinc-coated mild steel rod Ø 8 mm on an asymmetrical DIN rail	For adjustable mounting on a zinc-coated mild steel rod Ø 8 mm on an asymmetrical DIN rail	Packet of 100 pieces	Packet of 100 pieces	

Dimensions

81 536 801



Other information	To order, specify :
Use WEID MULLER plastic labels for marking components part number FW 4734-6.	<p>Standard products</p> <p>Standard products, non stocked</p> <p>1 Part number Example : Supply manifold (13 outlets) 81 536 801</p>

Products and specifications subject to change without notice.