

Rectangular Multi-connector with $\varnothing 2$ One-touch Fittings

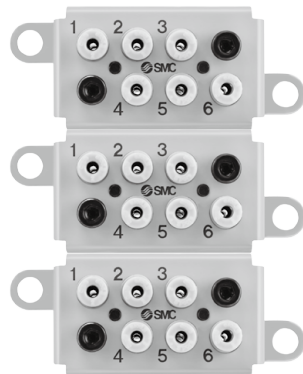
No. of Connecting Tubes: $\varnothing 2 \times 6$



Added $\varnothing 2$ One-touch fittings to the multi-connector.

■ Multiple pipes can be collectively connected/disconnected in one-touch operation.

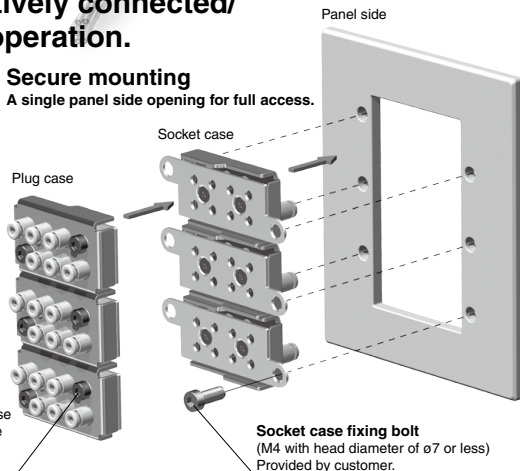
● Mounting example



<Actual size>

Secure mounting

A single panel side opening for full access.



Clamp bolt
Fix the socket case and the plug case with the clamp bolts.

Socket case fixing bolt
(M4 with head diameter of $\varnothing 7$ or less)
Provided by customer.

Model

No. of connecting tubes	Tubing O.D.	Model	Weight	Release button color
6	$\varnothing 2$	KDM6-02-X955-1	42.6 g	Light gray

Applicable Tubing

Tubing material	Nylon, Soft nylon, Polyurethane
Tubing O.D.	$\varnothing 2$

Specifications

Fluid	Air
Operating pressure range (Note)	-100 kPa to 1 MPa
Proof pressure	1.5 MPa
Ambient and fluid temperature	-5 to 60°C (No freezing)

Note) Please avoid using in a vacuum holding application such as a leak tester, since there is leakage.

Multi-connector Variations

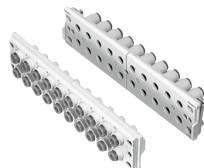
Series DMK

No. of connecting tubes: $\varnothing 3.2$, $\varnothing 4 \times 6$, 12



Series KDM

No. of connecting tubes: $\varnothing 3.2$ to $\varnothing 8 \times 10$, 20



Fittings

KQ2

KDM6

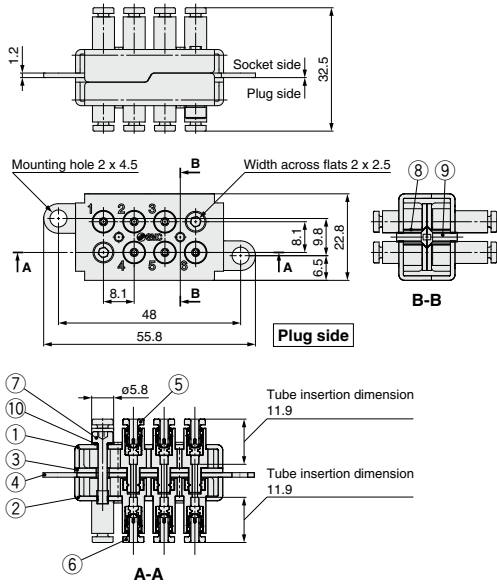
KDM

KDM6-02-X955-1



KDM6-02-X955-1

Dimensions/Construction

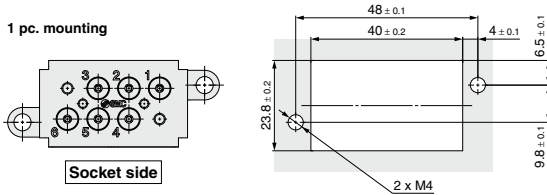


Component Parts

No.	Description	Material	Q'ty	Note
1	Case (A)	SPCC	1	Gray semi-gloss baking finish after zinc chromate plating
2	Case (B)	SPCC	1	Gray semi-gloss baking finish after zinc chromate plating
3	Plate (A)	Stainless steel 304	1	
4	Plate (B)	Stainless steel 304	1	
5	Plug connector $\phi 2$	—	6	Release button: Light gray
6	Socket connector $\phi 2$	—	6	Release button: Light gray
7	Hexagon socket head cap screw	SCM435	2	Black zinc chromated
8	Spacer	C2700T	4	Electroless nickel plating
9	Cross recessed countersunk head screw	SWRM	4	M2.5 x 8, Black zinc chromated
10	Gasket	PVC	2	

Panel fitting dimensions

1 pc. mounting



Multiple (2 pcs. or more) secure mounting

