

# Metering Valve with Silencer Series ASN2

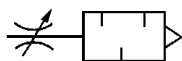
## Superior sound reducing performance

Over 20dB at Max. flow rate

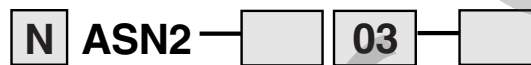
## Cylinder speed easily set

Shape of needle as the same as that of speed controller

## Retainer prevents accidental loss of needle



## How to Order



**Area Code**

Nil	Japan, Asia, Australia, UK
N	U.S.A.

**Options**

Nil	None
S	Sealant

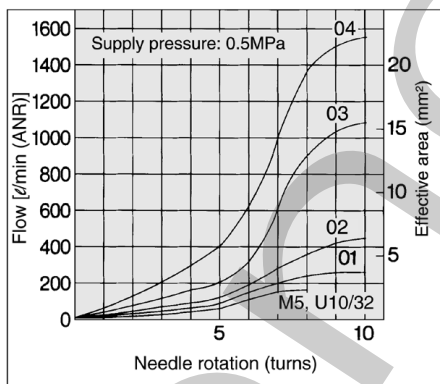
**Port thread**

Nil	M5, 10-32UNF, R
N	NPT

**Port size**

M5	M5 x 0.8
U10/32	10-32UNF
01	R1/8
02	R1/4
03	R3/8
04	R1/2

## Flow Characteristics



## Specifications

Proof pressure	1.5MPa
Maximum operating pressure	1MPa
Minimum operating pressure	0.05MPa
Ambient and fluid temperature	-5° to 60°C (No freezing)
Number of needle rotations	10 turns (12 turns <sup>Note 1)</sup> )

Note 1) ( ): Values for AS800, AS900.

## Model

Model	Port size	Effective area (mm <sup>2</sup> )	Weight (g)
ASN2-M5	M5 x 0.8	1.8	5
ASN2-U10/32	10-32UNF	1.8	5
ASN2-01	R1/8	3.6	17
ASN2-02	R1/4	6.5	34
ASN2-03	R3/8	16.6	55
ASN2-04	R1/2	24.5	107

Series ASN

## Construction

### Component Parts

No.	Description	Material	Note
①	Handle	PBT	
②	Needle	Brass	Electroless nickel plated
③	Lock nut	Brass <sup>Note 1)</sup>	Electroless nickel plated
④	Needle guide	Brass	Electroless nickel plated
⑤	Washer	Carbon steel	Nickel plated
⑥	O-ring	NBR	
⑦	Silencer	PVA sponge	
⑧	Silencer cover	Soft polyethylene	
⑨	Body B	Brass	Electroless nickel plated
⑩	Gasket	NBR/SUS304	M5,U10/32 only

Note 1) ASN2-01/02:Steel

## Dimensions

### Dimensions

Model	Screw D	Applicable tube O.D. d	L1		H
			Min	Max	
<b>ASN2-M5</b>	M5/0.8	10	20.5	23.3	8
<b>ASN2-U10/32</b>	10-32UNF	10	20.5	23.3	8
<b>ASN2-01</b>	1/8	15	30	35	12(12.7)
<b>ASN2-02</b>	1/4	20	34.2	39.2	17(17.5)
<b>ASN2-03</b>	3/8	25	37	42	19
<b>ASN2-04</b>	1/2	30	49	54	24(23.8)

Note) (in parentheses) are the dimensions of "NPT" screw specification.

### Caution

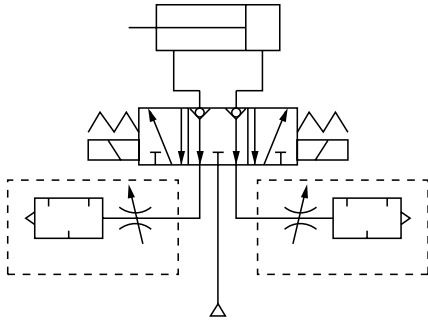
Be sure to read before handling.  
Refer to pages 64 and 65 for Safety Instructions and common precautions on the products mentioned in this catalog, refer to pages 66 to 68 for precautions for each series.

## Caution

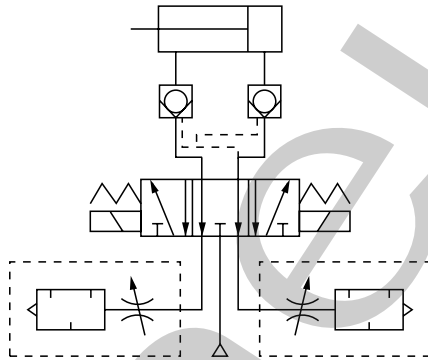
### ① Unsuitable circuit

#### (a) Perfect valve

(VF66□□, VS7-6-FPG, VS7-8-FPG)



#### (b) When check valve is ockated between actuator and solenoid valves.



### ② When P/A one-touch fitting Series KQH is connected to the valve supply port, these metering valves can not be installed directly in the valves listed below due to conflicting dimensions.

● : Available, □ : Not available

Fitting	One-touch fitting half union KQH				
	ø4	ø6	ø8	ø10	ø12
Metering valve with silencer					
ASN2-M5	●	VZ2□2 VZ110 VZ3□20			
ASN2-01	●	●	VZ5□20 VZA5□2 VZ4□20		
ASN2-02			●		
ASN2-03			●		
ASN2-04					●

Note) M5...Miniature fitting can be used for all valves except for VZ2□2.